

CASCADE MAGNET

FEATURES

- Easy assembly and maintenance
- Low energy cost
- Hatches to check process
- Automatic metal ejection



LIVESTOCK



POULTRY



FISH



PETS



FOOD



CHEMICALS



BIOMASS

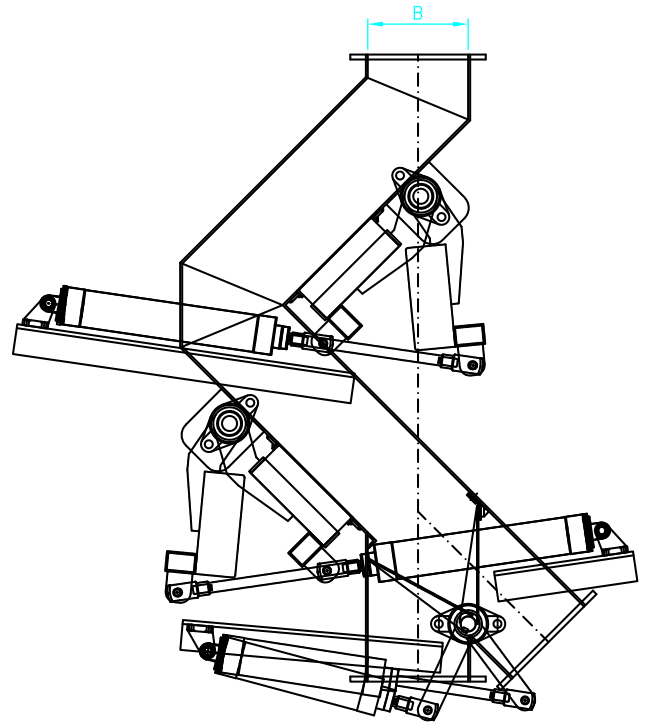
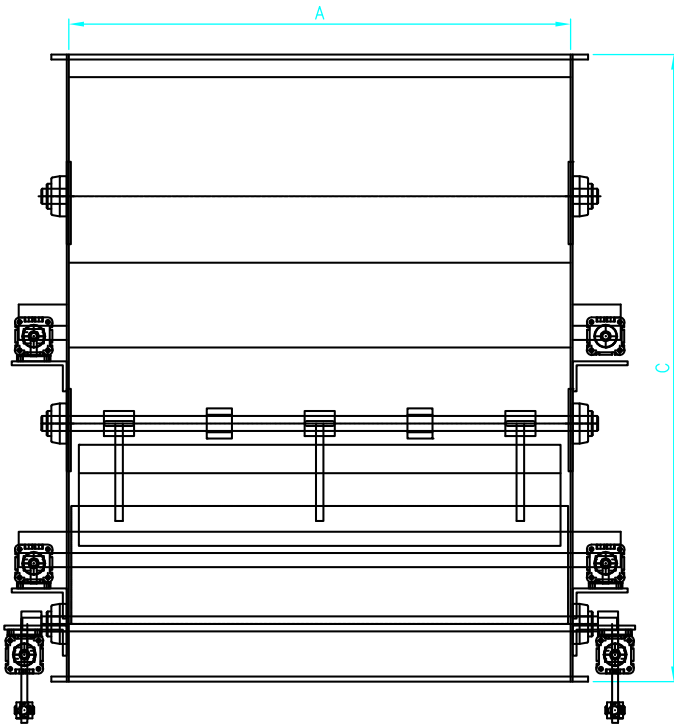


CASCADE MAGNET

Magnets are engineered for eliminating the metal, iron and other foreign bodies in material intake points. Metals are caught via the magnet while the materials go through the machine. Metals are captured via pneumatic pistons and are contained in a special chamber to be disregarded from the system. There are three types of magnets: Single layer, type Y and type Z.

USAGE AREAS

- Material intake systems
- Specific check points on units, process transitions



	TYPE	MODEL	DIMENSIONS (mm)			CAPACITY (m³/h)	
			A	B	C		
	Z MAGNET	ZMG 200x600	600	200	1250	90	
		ZMG 200x800	800	200	1250	140	
		ZMG 200x1000	1000	200	1250	200	
		ZMG 200x1200	1200	200	1250	240	

600 Evler Mah. Balıkesir Asf. Sol Taraf No: 96, 10201 Bandırma / Balıkesir

P: +90 266 733 83 63 (3 Lines) • F: +90 266 733 83 66

    | yemmak.com

