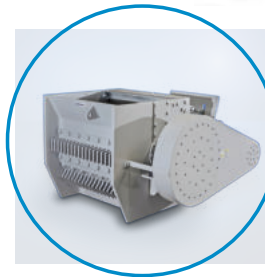
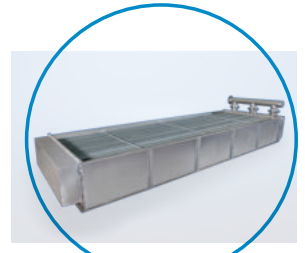




RENDERING

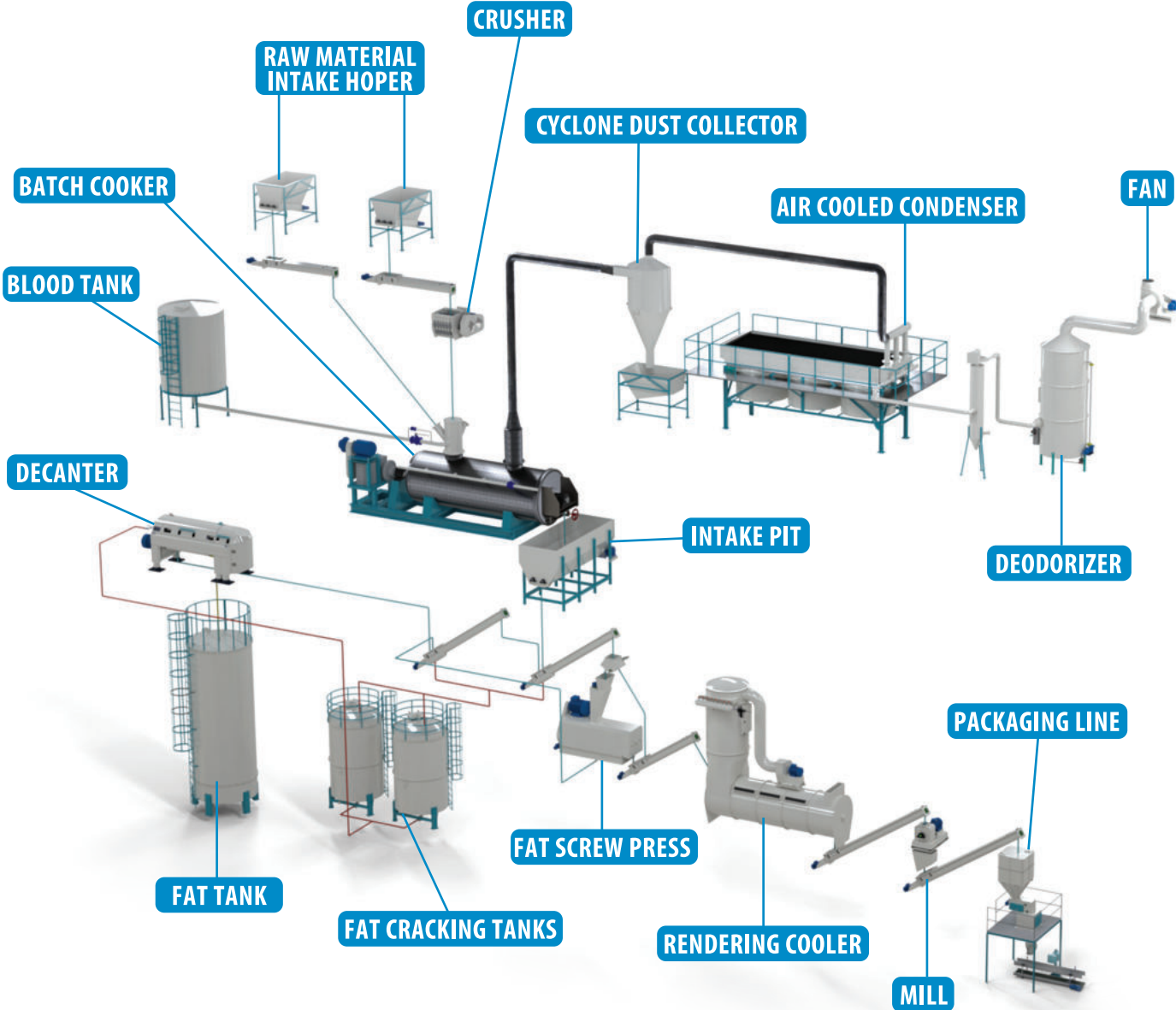
CONTRIBUTON TO FEED PRODUCTION AND ENVIRONMENT

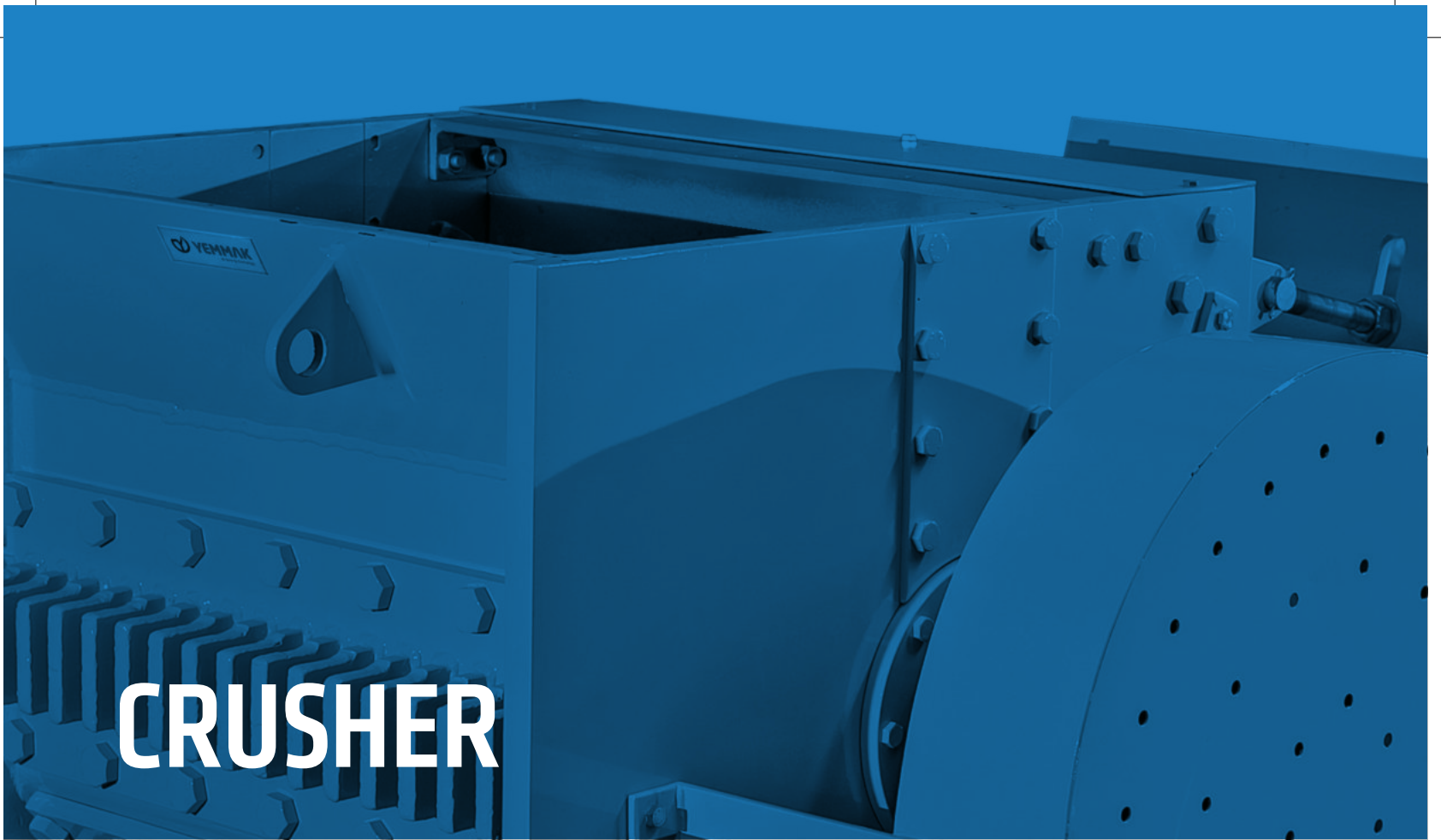
All waste that can not be consumed by humans as food (blood, feathers, fat, etc.) in order to reduce and prevent process waste, it can be recycled by converting it into a feed additive in the Rendering plant. In this way, solid waste is recycled, while the fragrant steam generated in rendering facilities is washed and made odorless. The Rendering plant benefits both the manufacturer and the environment.



RENDERING PROCESS FLOW DIAGRAM

Since 2000, we have been setting up rendering facilities in factories for a sustainable environment.





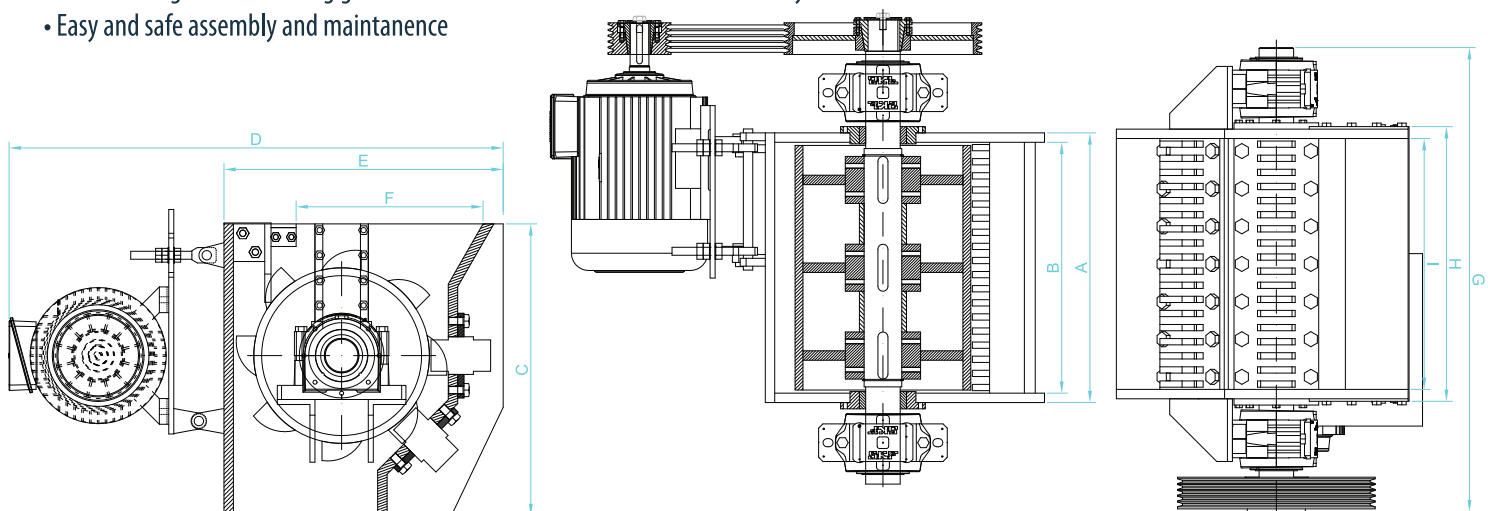
CRUSHER

Yemmak Crushers are designed specifically for the rendering process and they can prepare animals' bones, offal, skeletons and the internal organs for the other stages of the process by effectively and homogeneously shredding them.

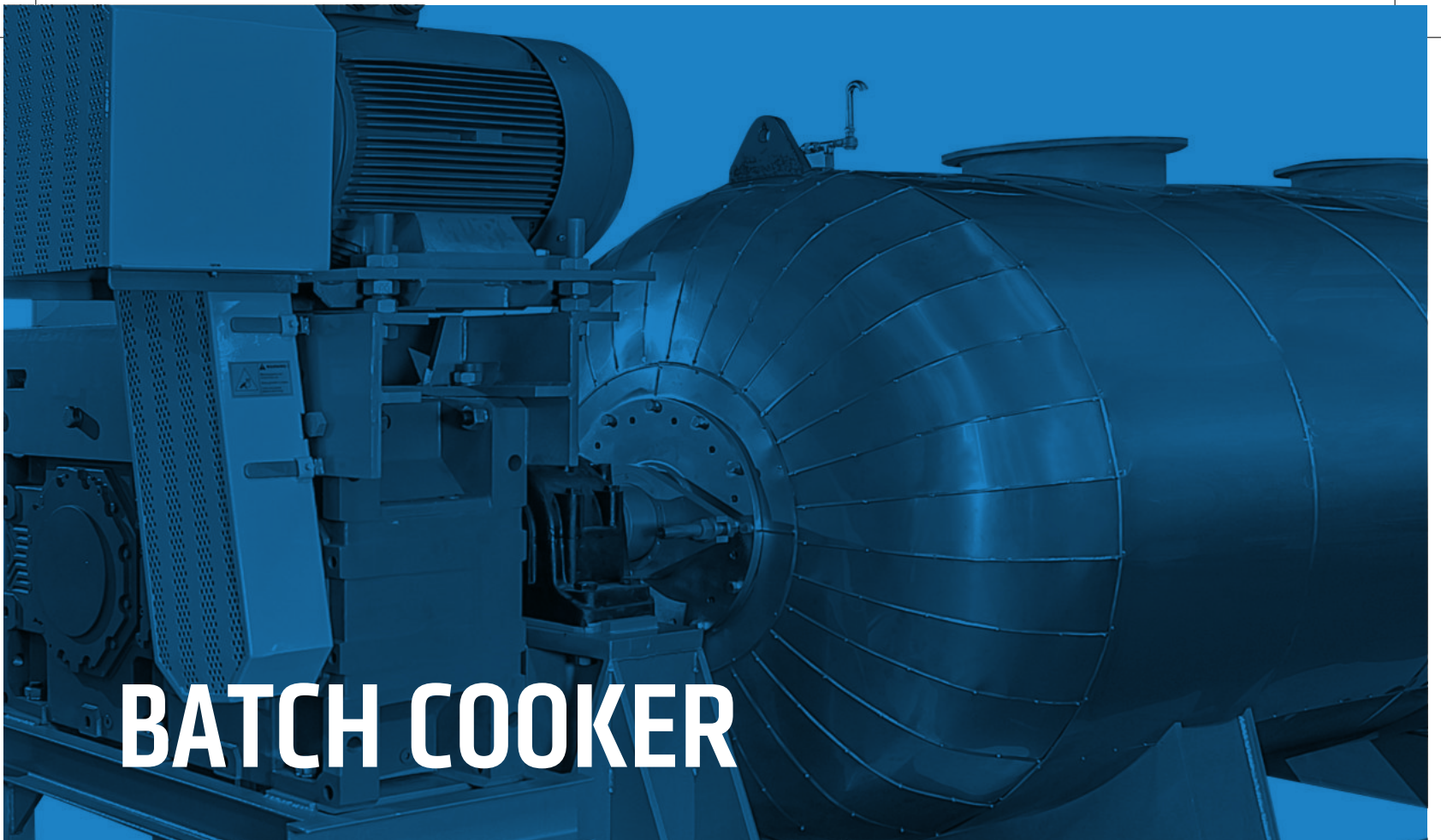
Exchangeable shredding grills are installed in couple to achieve a more homogenous shredding experience. Also if these shredding grills get deformed in prolonged hours of working, spare parts aren't needed, as their direction can be reversed. Thus, the grills have four times the longevity.

FEATURES

- Welded type, compact rotor
- Shredding blades with specifically enhanced surfaces
- Two exchangeable shredding grills with reversible blades can be used four way
- Easy and safe assembly and maintenance



MODEL	DIMENSIONS (mm)								
	A	B	C	D	E	F	G	H	I
RCR Ø560X780	150	800	930	1575	890	596	1480	876	800



BATCH COOKER

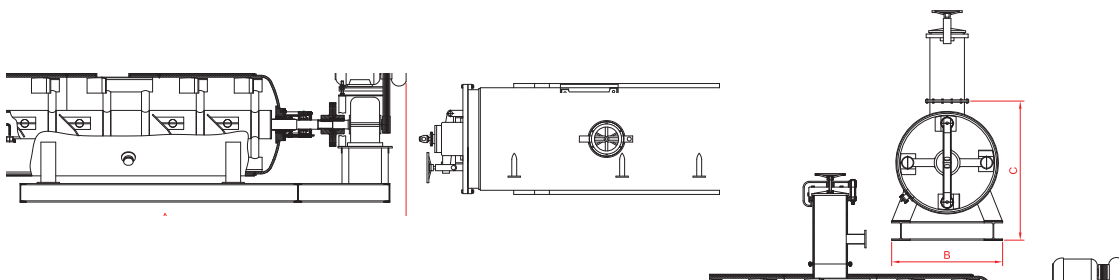
Batch Cooker consists of specifically designed rotor and paddles. Boiler gets a smooth start up with a counter measure against heavy loads from a reductor with a two way rotating engine and 'V' shaped pulley which is tied to its hydraulic coupling output. Batch Cooker is used for cooking these animal by-products:

- Meat, offal and bone mixtures
- Poultry animals' feathers
- Internal organs
- Blood

Boiler's body is designed with a steam jacket. The rotor has a rotatory steam nozzle attached. The nozzle emits steam into the rotor itself. The rotor is supported by heavy duty bearings from both sides and the rotor mill prevents leakage with the adjustable gasket.

FEATURES

- High capacity range
- Heavy duty type bearings
- Material intake and exit ducts
- Humidity sensor
- Manometer and thermometer gauges
- Rotatory steam nozzle
- Specific designs for different needs
- Easily intervenable
- Isolated body and surface coating



MODEL	DIMENSIONS (mm)			COOKING SURFACE AREA (m ²)	MOTOR (kW)	WEIGHT (Kg)
	A	B	C			
C5000	6250	1800	1960	26	37	16800
C8500	7780	1800	2260	40	55	23000
C12500	9480	2100	2600	52	90	32000

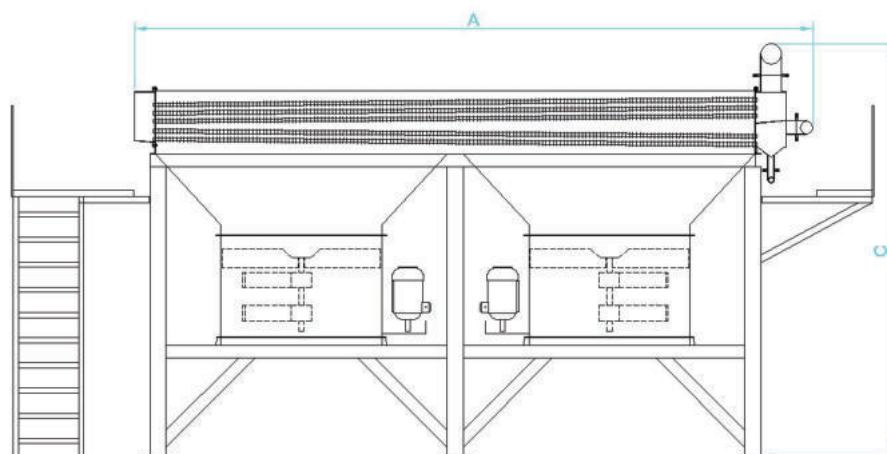
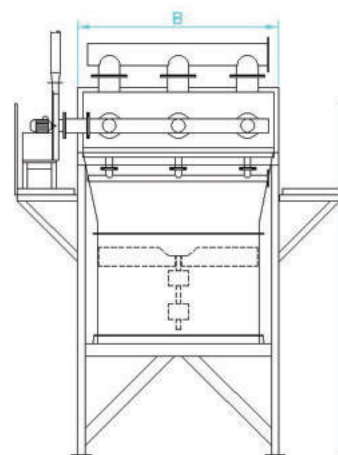
MODEL	COOKER FILLING QUANTITY (Kg)			
	MIXED MEAT OFFAL (Kg)	RAW BLOOD (Kg)	WET FEATHER (Kg)	MIXED MEAT OFFAL & BONES (Kg)
C5000	3000	2400	2700	3000
C8500	5000	3400	4600	5000
C12500	8000	5000	6500	8000

AIR COOLED CONDENSER

Yemmak Air Condenser is engineered to condense the steam which is generated in the boiler during the cooking process. Electrical engine propelled axial flow fans, blow the ambient air to the assorted pipe bundle. These stainless steel pipes also have stainless steel fins, ensuring the enlargement of the heat transfer surface area. Other surfaces that are in contact with the steam have been hot-dip galvanized and made of stainless steel. Dual and triple fan setups are available.

FEATURES

- Maintenance platform
- Exhaust fan for non-condensed gasses
- Easy to setup
- Depending on the environment, fans can be employed one by one
- PT100 thermal sensors



MODEL	CONDENSER CAPACITY (Kg/h)	DIMENSIONS (mm)			MOTOR (kW)	WEIGHT (Kg)
		A	B	C		
HK2000	2000	6750	2000	3600	2x7,5	4300
HK3000	3000	6750	2000	3800	2x11	5500
HK5000	5000	6750	2000	4100	3x11	7500

DEODORIZER

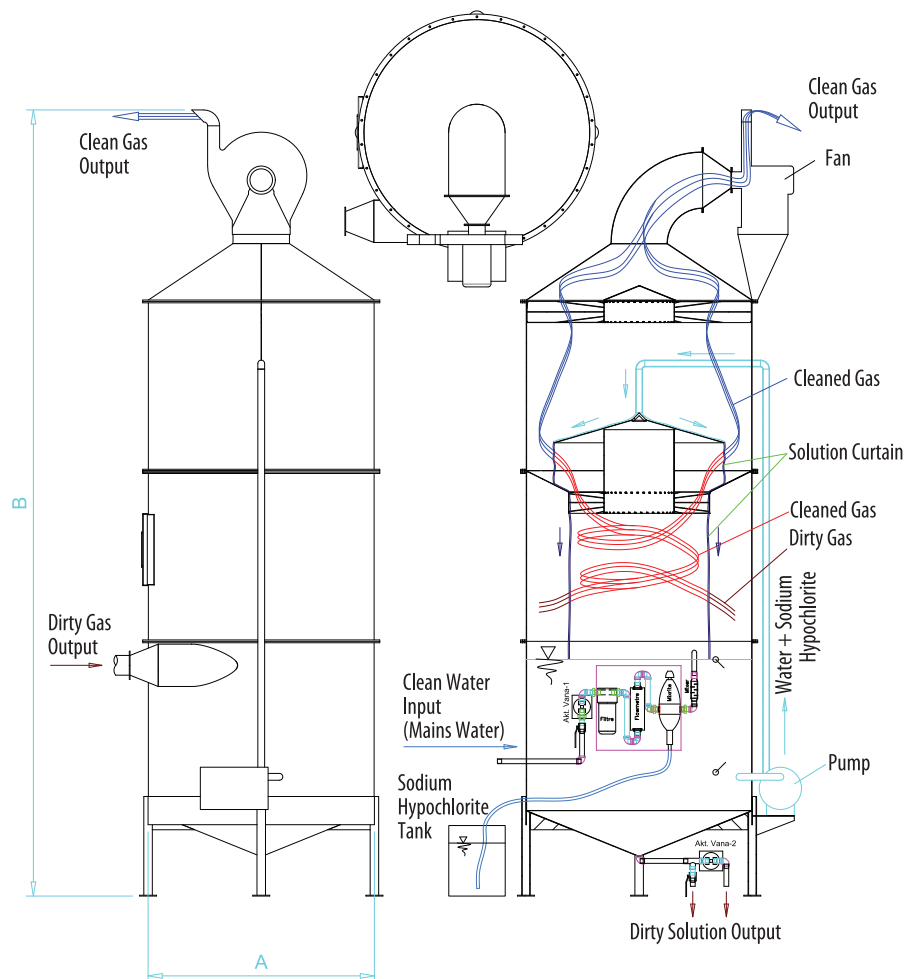
Deodorizer is used for deodorizing odoriferous steam from the cooking boiler with water and certain chemicals at the rendering units. It's made of 304 quality stainless materials. Its body consists of three parts. Bottom section houses a chemical-water composition. This solution is pumped to the top section. On its way back to bottom, it runs into the odoriferous steam. The steam goes into a chemical reaction with the water-chemical solution and loses its smell. The fins in the machine retain the liquid particles in the air.

FEATURES

- Made of 304 quality stainless materials
- Automatic solution fill and drain
- Automatic preparation of the chemical solution

USAGE AREAS

- Rendering Units



MODEL	DIMENSIONS (mm)	
	A	B
RDEO - 1600	Ø1600	5575

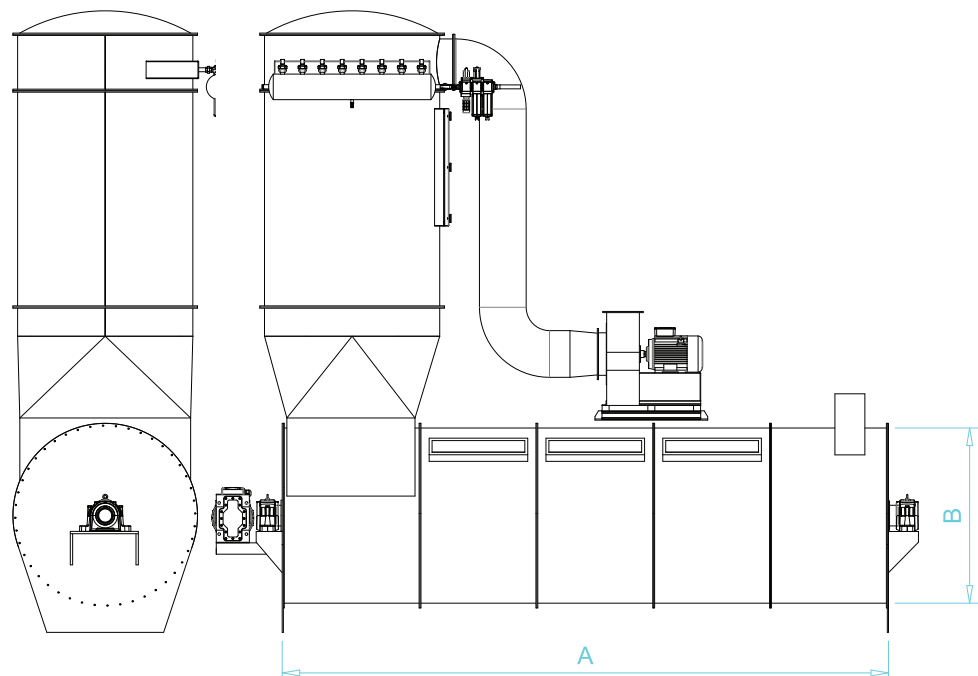
RENDERING COOLER

Rendering cooler is designed for the cooling of product after heat treatment. It works with the principal of contacting the product with the cooling air. They are cooled by applying reverse air flow with a filter and fan in the hot cooler. Particles in the cooling air is caught by jet filter system which is installed at the top of the cooler. Rendering cooler is a continuously working machine.

The strong structure of the flaking roller mill ensures minimum maintenance cost with maximum performance. Rendering cooler is equipped with sight glasses including cleaning brushes and openings with counterflanges for air intake and outlet. The airflow is regulated by a hand-set damper. A product side outlet is installed at the air intake end. The rotor consists of a rotor pipe with agitating arms and paddles to lift the product up into the cold air stream.

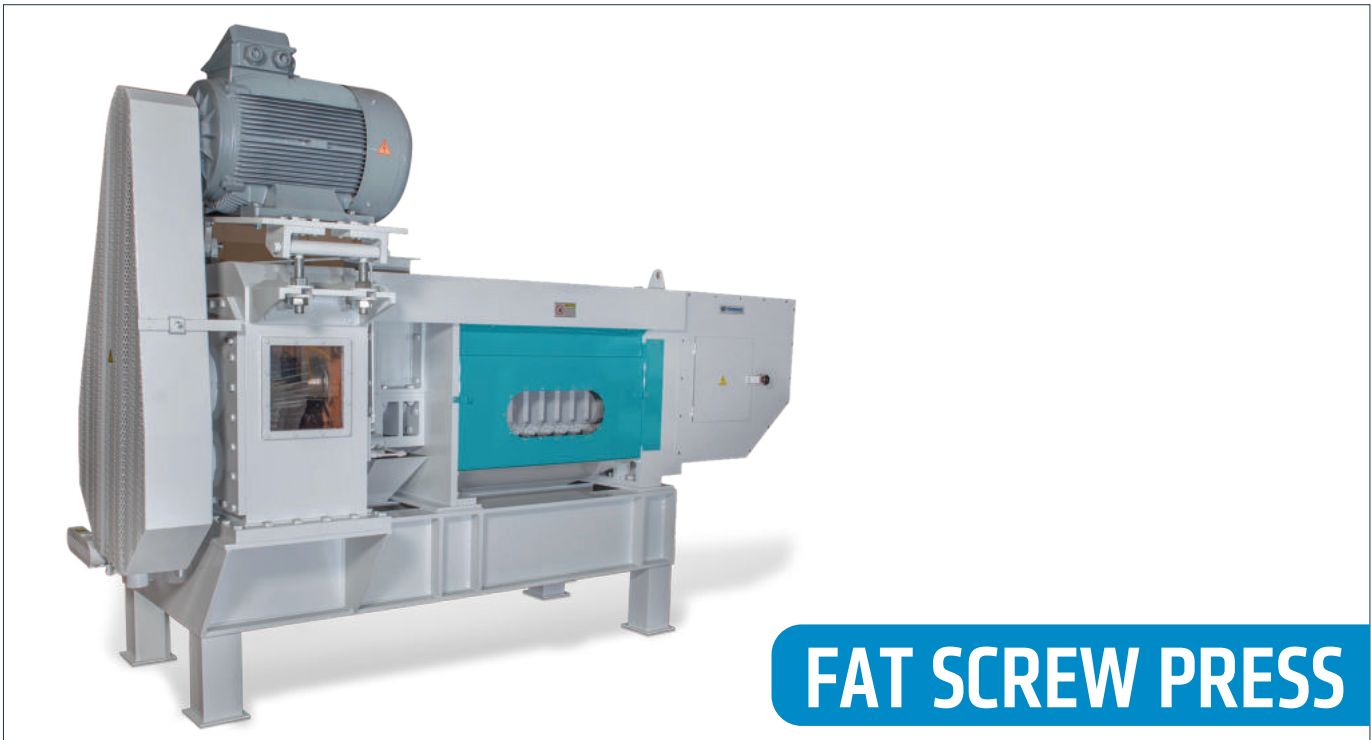
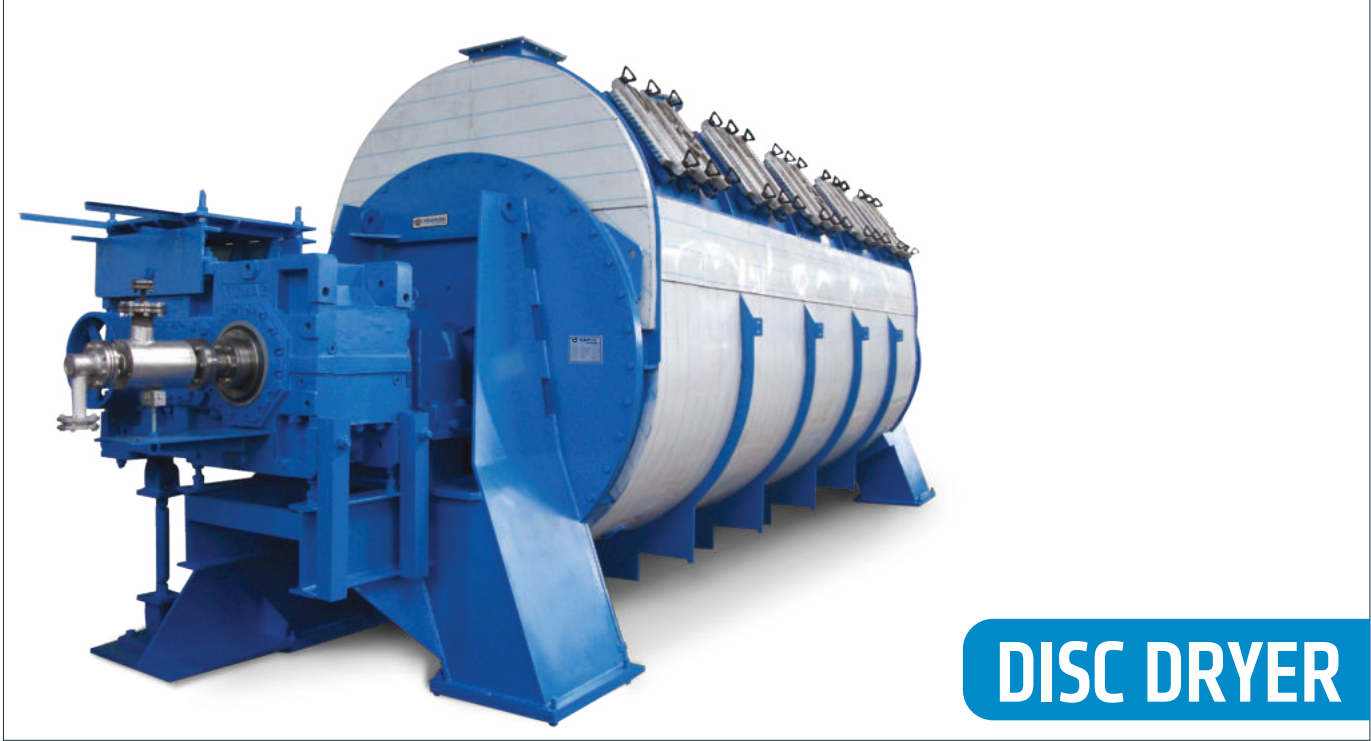
FEATURES

- Easy to assemble and use
- Low energy costs
- Sturdy construction with few components
- Lowest maintenance
- Cleaning brushes and air intake and outlet
- Sight glasses



MODEL	DIMENSIONS (mm)		CAPACITY (m ³)	MOTOR (kW)	FAN (kW)
	D	L			
RMC - 1609	9000	Ø1600	18	18,5	11

OPTIONAL MACHINERY



600 Evler Mah. Balıkesir Asf. Sol Taraf No:96, 10201 Bandırma / Balıkesir

P: +90 266 733 83 63 (3 Lines) • F: +90 266 733 83 66

[f](#) [in](#) [@](#) [v](#) | yemmak.com

